



ديجيتال سيماتيک لأجهزة القياس والتحكم  
Digital Simatic PLC Instrumentation & Control Equipment

# Company Profile, DIGITAL SIMATIC PLC Instrumentation & Control Equipment

## About The Company



DIGITAL SIMATIC PLC is an Electro-Mechanical contracting company specialized in providing pre-engineered solutions, value engineering and procurement of material according to specification within budget and executes all Electro-Mechanical works at site.

We were structured around a core of highly skilled engineers offering exceptional technical abilities in the use of advanced computer and controls equipment to develop, design, and implement industrial systems

Maintaining a knowledge base of today's leading edge products and possessing the expertise to successfully implement these products ensures clients receive a solution that increases and sustains production, safety, and reliability while reducing operating costs.

We ensure that customers receive the highest level of expertise and dedication during the implementation of a project, as well as provide superior support to our clients after the project is in operation. Our solutions involve real-time operations and enable organizations to coordinate their production and industrial operations with business objectives.

We have earned a "customer oriented" reputation by keeping its focus on providing the best value to our customers through quality products and services.

## Services



### **Manufacturing production lines**

and operational consultancy associated with industrial environments, infrastructures, and smart cities. We work to advise the industry and infrastructures sectors to manage We have an Ali team to manufacture and maintain production lines, and we have enough experience to be the first company in the Middle East to manufacture a rapid freezing tunnel using liquid nitrogen. We manufacture canned and food production lines in general.



### **Electromechanical Services**

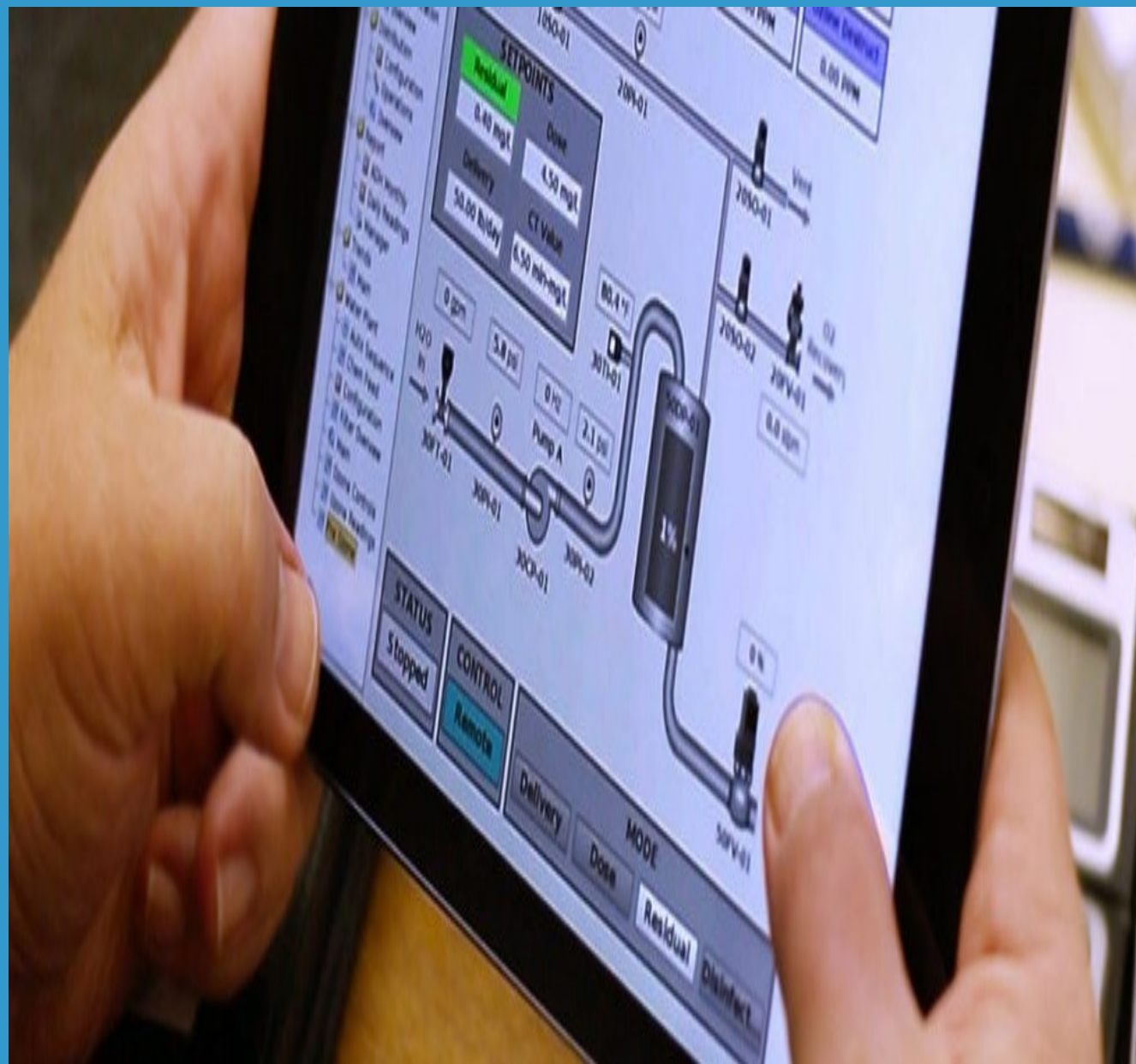
Complete in-house electromechanical system design from concept to implementation. Design with an optimum balance between reliability and cost depending on customer Accurate, efficient programming for PLC, HMI and SCADA Systems. Creation of Electrical cupboards including investigation (LV/Robotization) Fabrication of Electrical cabinets including inspection (LV/Automation)

Electromechanical Equipment Installation Install and set up control systems instruments and commission equipment in new and existing control panels to comply with regulations. Fast and efficient consultation on set up of instrumentation for optimum use. Operation and maintenance of water/waste water plants.

# SCADA SOLUTIONS DIGITAL SIMATIC PLC Instrumentation & Control Equipment

Our Major Projects division can undertake industrial construction projects of all scopes and sizes. At ECS, we offer unique and innovative project execution strategies using leading-edge cost control analytics, performance management, and our dedicated construction management professionals. From our Construction Management Team through to our field staff, we're committed to executing projects safely, on-time, and within budget

Systems



Supervisory Control and Data Acquisition (SCADA) systems are beneficial in the monitoring and controlling of plant and equipment operations and in the gathering and analyzing of big data. ECS SCADA Hosting Services systems deploy multiple software and hardware elements, resulting in several benefits for our clients, including better security, increased production, increased runtimes, early detection of poor producers or well degradation, reduced operating costs, fewer well failures and limit driving time. A SCADA system

**allows for remote management and process control of dispersed location Industrial Construction**

## **Motor Control Centers MCC**



A Motor Control Center (MCC) is an assembly of one or more enclosed feeder sections having a common power bus bar and principally containing Motor Control units. Motor Control Centers are having several Motor Starters assembled in one common panel. A Motor Control Center can also include Variable Frequency Drives (VFD), Programmable Logic Controllers (PLC).

Motor Control Centers are used in the manufacturing industries where large numbers of electric motors employed for various process. Where very dusty or corrosive processes are used, the motor control center may be installed in a separate air- conditioned room, but often an MCC Panel will be installed on the factory floor adjacent to the machinery to be controlled.

## **Water + Wastewater treatment Automation**



We are a full-service industrial automation company that can provide your business with a start to finish solution. ECS works with the major industrial environmental companies to provide SCADA systems to support the water treatment processes required by today's stringent standards. Our capabilities are endless, whether you require project design and management, programming, manufacturing, installation, testing, maintenance, licensing, and more. We also offer solutions for DCS, PLC, HMI, RTU, SCADA, or assistance with telecommunications. As one of Egypt's leading industrial automation companies, we understand the importance of having operational and effective automation solutions – the smoother the process, the less time wasted and the higher efficiency you'll experience. From simple well sites to installing a large DCS, PLC, or SCADA system, we are fully equipped to take on any project.



## SUBSTATION AUTOMATION SYSTEM

Substations are an integral part of any plant which consumes or exports power. This substation needs to be automated so that the parameters are monitored continuously so that the plant's consumption adheres to the designed boundaries. In order to achieve that the automation system employs several IEDs such as RTUs, reclosers, PLC, V meters, metering at several stages, switching, volt / VAR, wave form monitoring, event data, management etc. It is also essential to follow the required IEC standards.



## Industrial Maintenance

We believe in building lasting relationships by providing ongoing, preventative, and emergency maintenance services. Our job doesn't end with the completion of construction; we're here to be a reliable resource in helping you minimize downtime, reduce cost and safety risks, and maximize total output. Backed by a wealth of knowledge and experience providing maintenance programs to companies of all sizes, we can do everything you need.



## Industrial Control Panels

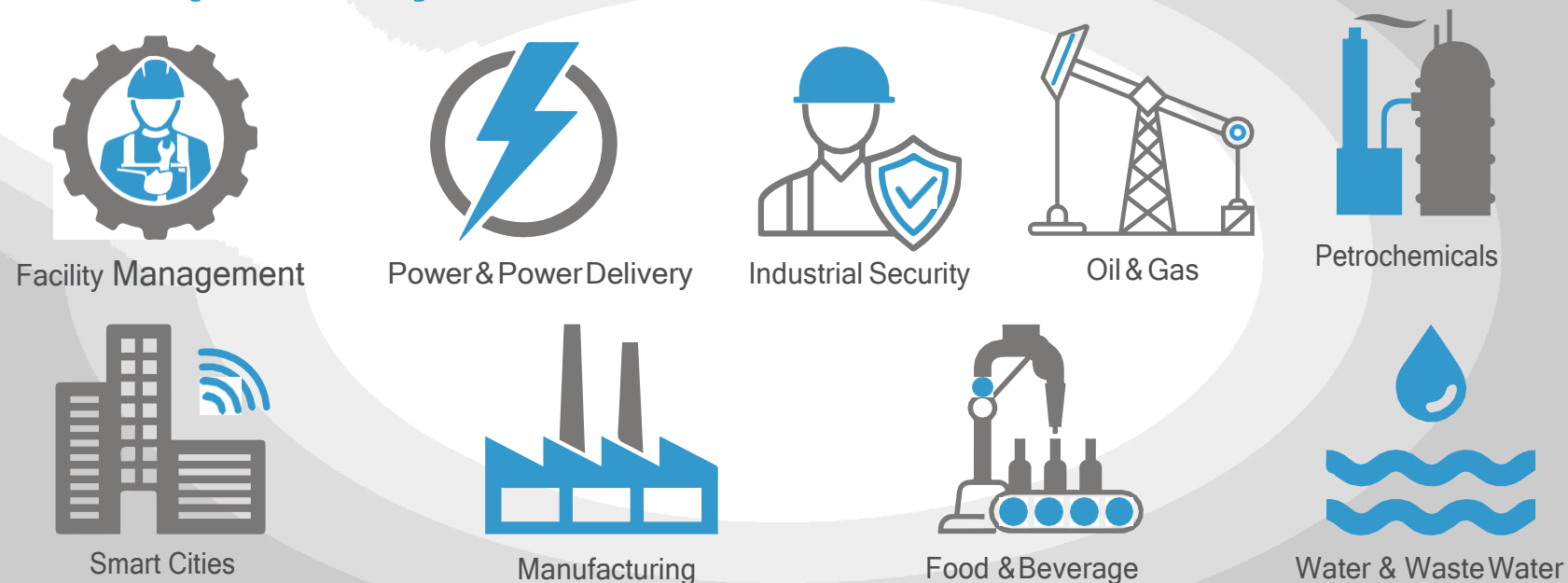
At ECS, we're experts in the design, manufacturing, installation and maintenance of analog and digital control panels. As part of our industrial communications and control panel division, we provide reliable solutions for all your needs. A well-designed industrial control panel could make all the difference in the operation of your company. From large DCS and PLC to RTU panels, our certified shop can build anything you need. Supported by our drafting department, Procurement Team, and multiple in-house purchasers, our panel shop is one

# SCADA Systems



- **HMI Tune Up** Are your operators fed up with quirks in your current SCADA application? Do you need to modernize your application to realize your production potential? We can help you meet your business needs without sacrificing your current software investment
- **Architecture Consulting** Egypt Control Systems can help you design a SCADA architecture that will meet your specific business needs. From system layout to assistance with ordering the right components we can guide you through it all
- **HMI Design and Installation** The right design is critical to realizing the value of your HMI. Whether you are building a new control room, adding a terminal or just adding a few screens, Egypt Control Systems can help. We have the industry experience and technical knowledge to design and implement your HMI
- **Historian Setup** If your historian isn't set up properly or you haven't been properly trained in how to turn your historical data into actionable information, you likely aren't realizing its value. Let Egypt Control Systems help you set up your Historian and discover how powerful the information can be.
- **Enterprise Data Collection** Companies are becoming more reliant on fewer experts. Often process experts need to support multiple regions from a central location. Egypt Control Systems can help you design a multi-tiered Historian structure that will provide data access to all levels of your organization.

## our specialty





## Product Solution



ABB is a leading global technology company that energizes the transformation of society and industry to achieve a more productive, sustainable future.

By connecting software to its electrification, robotics, automation and motion portfolio, ABB pushes the boundaries of technology to drive performance to new levels. With a history of excellence stretching back more than 130 years, ABB's success is driven by about 110,000 talented employees in over 100 countries.



The global specialist in energy management.

At Schneider, we believe access to energy and digital is a basic human right. We empower all to make the most of their energy and resources, ensuring Life Is On everywhere, for everyone, at every moment.

We provide energy and automation digital solutions for efficiency and sustainability. We combine world-leading energy technologies, real-time automation, software and services into integrated solutions for Homes, Buildings, Data Centers, Infrastructure and Industries.

## Rockwell Automation

Rockwell Robotization is a main provider of mechanization controls and drive frameworks in the Center East and has a foundation to address the issues of clients working together around here. These are supplemented by an organization of neighborhood framework arrangement suppliers and wholesalers in the District.

## SIEMENS

For over 75 years, Siemens has been dynamic in Saudi Arabia, where it stands firm on driving footings in its Industry, Energy and Medical services Areas

Our experience traverses 160 years of advancement, quality, dependability and specialized accomplishments.



AVEVA, a global leader in industrial software, drives digital transformation for industrial organizations managing complex operational processes. Through Performance Intelligence, AVEVA connects the power of information and artificial intelligence (AI) with human insight, to enable faster and more precise decision making, helping industries to boost operational delivery and sustainability. Our cloud-enabled operational data management,



We are a main provider of items, arrangements and administrations for modern interaction estimation and computerization. We offer complete cycle answers for stream, level, pressure, investigation, temperature, recording and advanced correspondences across a wide scope of enterprises, streamlining measures concerning financial effectiveness, security and ecological insurance.

Phoenix Contact is a globally present, Germany-based market leader. Our group is synonymous with future-oriented components, systems, and solutions in the fields of electrical engineering, electronics, and automation. A global network across more than 100 countries and 17,600 employees ensure close proximity to our customers, which we believe is particularly important.

Considered the official beginning of the company that became Honeywell, in 1885, inventor Albert Butz patented the furnace regulator and alarm. He then formed the Butz Thermo-Electric Regulator Co. in Minneapolis and soon created a device he called the «damperflapper.» That invention was a predecessor to the modern thermostat. The Consolidated Temperature Controlling Co.

## Recent Projects



### Faculty of dentistry

Owner: Suez University

A complete study and design of BMS System (hardware & Software).

Scope covers design and specify a complete BMS system including field devices, DDC Panels, MCC panels, for all HVAC equipment (Chillers, AHUs, FCUs, Dampers, primary and secondary pumps)



### Al-Asyah Deep wells pumping stations

■ Main Contractor: Arab contracting and trading co.

■ Owner: Al Qaseem directorate of water  
Integration of 5 Deep wells pumping stations,

■ Scope: design, supply, install, test and commissioning of automation panels and integrate added signals into existing PLC/ SCADA system

PLC: Schneider Modicon M200.

SCADA: Wonderware InTouch.



### Cairo Metro Line 3 - Phase 4

■ Main Contractor: Otis Owner: National Authority for Tunnels

■ Design, install and Testing PLC panels of 14 Elevators of 5 Stations.

■ Integrate Elevator signals in the New Central SCADA System.

■ Termination and Testing 60 PLC panels of Escalators.

■ Supply, Install and testing all Profinet & Modbus cables to communicate between Escalators/Elevators of the 5 Stations.

PLC System is (S1500-7 for Main SCADA, ET 200SP for Escalator and S1200-7 for Elevator) , SCADA System is Win CC.



## KADRA Al-Darb Water Networks

- Main Contractor: Aljazea for contracting and trading Co.
- Owner: General directorate of water - Jizan
- SCADA system of Kadra pumping station
- Scope: Design, Supply Supervision of installation, Test & Commissioning and Start-up of a complete SCADA system.
- PLC: Schneider Modicon M340.
- SCADA: Wonderware InTouch



## Unaiza OCS

- Main Contractor: Randa for contracting and trading co.
- Owner: Al Qaseem directorate of water
- Odor control system for Unaiza STP
- Integration of 14 Odor control units + 2 Decanter units in Unaiza STP,
- Scope: design, supply, install, test and commissioning of automation panels and integrate added signals into existing PLC/SCADA system
- PLC: Schneider Modicon Premium
- SCADA: Wonderware system platform



## I&C of New Aswan WTP

- Main Contractor: Arab Contractors Co.
- Owner: Aswan Water Company
- A complete SCADA system of new Aswan WTP - Aswan - Egypt.
- Scope: Design, Supply Supervision of installation, Test & Commissioning and Start-up of a complete required instrumentation including Flow, Pressure, Level and loggers
- Design, Supply Supervision of installation, Test & Commissioning and Start-up of a complete PLC/SCADA system.
- PLC: Schneider Modicon M340.
- SCADA: Wonderware InTouch



## IQF quick-freezing tunnel- production line

- Owner: ENG. Kamal Mohamed - CO. ROBERTO
- Manufacture of a complete production line, and one of the most distinguished equipment is a IQF quick-freezing tunnel with a capacity of tons per hour -liquid nitrogen freezing
- PLC: Schneider Modicon M200.



## Faragallah Factory

- Upgrade the automation system of Canned beef production line
- Advanced technology used in the manufacture of production lines, Under the supervision of a group of production line industry engineers with the highest level of experience



## Salhia Solar pumping Station 125KW

- Supply, install, testing and commissioning



## Wadi Natroun Solar pumping Station 72KW»

- Supply, install, testing and commissioning



## ELSABAH For Food Industry

- Jam production line Installation, Testing & Commissioning
- Repair and Upgrade the PLC system of CIP Process.
- Repair the Malfunction in the PLC system of Boiler.
- Tomato paste production line Installation,



## Testing & Commissioning Zefta Charity Hospital

- Owner: Dr. Mohamed Moussa
- Scope: Design, Supply Supervision of installation, Test & Commissioning and Start-up of MDBs, MCCs and nurse call system.

## Contact information



Address: UAE. DUBAI, ABU DHABI AND ALSHARJAH

Phone: +97146778847

W.M: +97150998458

Email: [PLC@digitalsimatic.net](mailto:PLC@digitalsimatic.net)

Website: <https://sites.google.com/view/digital-simatic-plc/>

## **MISISON**

**Digital simatic is setting itself up for becoming one of the top five providers of high quality, efficient, and effective information technology products and services by the year 2030. Additionally, it aims to be able to successfully serve 5000 clients through UAE of 30 well trained and professional employees by the year 2025.**



## **VISION**

**Digital simatic hopes to become a highly dependable I.T. product and service company that can provide the latest and trendiest products on the market at the most reasonable price points. We also aim to be a company that can help clients find the most suitable and cost efficient product or service that is tailored to their personal wants and needs.**